



**INDUSTRIAL CONTROL SOLUTIONS**

Handy-Grips® Ergo-Grips® Joystick Bases

P.O Box 23801  
Portland, Or 97281-3801

7943 SW Cirrus Dr.  
Beaverton, Or 97008

**1-800-621-8754**

# Handy-Grip *series*



**8601 - RB**

The Cyber-Tech, Inc. 8601-RB Handy-Grip Series handle has proven to be an excellent performer in harsh industrial environments. With up to thirteen switching options it will handle all your AC or DC functions and perform in even the most demanding application.

The 8601-RB is fabricated from die-cast aluminum and powder coated making it an extremely durable and robust handle. The 8601-RB is built to your exact specifications with many available options including: multiple switching, toggles, rockers, LED's, adaptors, custom face-plates and wiring. Additionally, this unit will mount to any joystick on the market.

The switch functions on the 8601-RB include up to 10 thumb pushbuttons and 3 triggers. Cyber-Tech's own "soft touch" SPDT pushbutton switches are standard on this unit. The 8601-RB is designed for use by both right and left hand operators. Multiple switching options and ease of field maintenance make this handle the perfect candidate for your unique application.

Cyber-Tech, Inc. has many different products and available customizations. If you do not see what you are looking for please call our sales staff and we will custom tailor a solution for you.

**[www.cyber-tech.net](http://www.cyber-tech.net)**

# Handy-Grip *series* 8601 - RB

## Mechanical Specifications

Dimensions: 16.51 cm x 10.16 cm x 8.255 cm (6.5 in x 4.0 in x 3.250 in) (L x W x D)

Weight: 0.50 LBS (231 Grams)

Material: Aluminum

Mounting Thread: female 1/2 NPT

Enclosure type: Single piece

## Electrical Specifications

Switching: 0, 1, 2, 3, 4, 5, 6 functions

Trigger: 0, 1 function or 1 single 2 stage function

Standard Switches: Soft touch Mom pushbutton

Switch Rating: 120vac @ 5 amps , 30vdc @ 5 amps

Switch Life: 10,000,000 cycles



## Switch Locations

8501-RB is shown with all switch locations.

Handle is configured at time of order and machined accordingly. Custom switch location can be added per your layout request.

CYBER·TECH, Inc.

[www.cyber-tech.net](http://www.cyber-tech.net)

# Handy-Grip<sup>series</sup> 8601 - RB

## Control Handle Breakdown

LOCATION	PART #	DESCRIPTION
1	99-SC-6-32x3/8-BH	Button Head Cap Screw
2	99-W-6-N	Nylon Washer
3	65-A30323-01	8601-RB Blank Faceplate
4	69-B92321-04	8601-RB Housing
5	33-R-960144-01A	8601-RB Gasket
6	99-SS-.25x3/16-FH	Set Screw

Note: A detail parts breakdown example of your Custom Configured handle is available upon request.



## Switching Example



CYBER·TECH, Inc.

[www.cyber-tech.net](http://www.cyber-tech.net)

# Handy-Grip *series*

8601 - RB

## Options



Custom

### Standard Cap Color Selection

### Sealed Boot Selection

Mom SPDT



Maint SPDT



Maint DPDT



Toggle SPDT



Toggle DPDT



Std Rocker

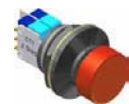


Available options:

Maintained, momentary, custom switching functions, lamps, e-switches, two stage triggers and pushbuttons, connectors and special wiring can be added; please consult CTI for further options. 1.800.621.8754



E-stop switch



2 Stage switch



Straight Stud Adaptors

- 14mmX1.0
- 10mmX1.25
- 1/2-13 External
- 12mmX1.75
- 14mmX2.0



Angled Stud Adaptors

- 1/2-13 External
- 10mmX1.25
- 12mmX1.75
- 14mmX2.0



Female Stud Adaptors

- 1/2-13-F 8mmX1.25-F
- 3/8-16-F 12mmX1.5-F
- 5/8-11-F 12mmX1.75-F
- 3/4-10-F 14mmX1.5-F
- 3/4-10-F 14mmX2.0-F