

1201-RB HANDY-GRIP

6 Pushbutton + 2 Triggers w/Boots



Product shown without cable harness for clarity

GENERAL DIMENSIONS



Product shown without switches for clarity

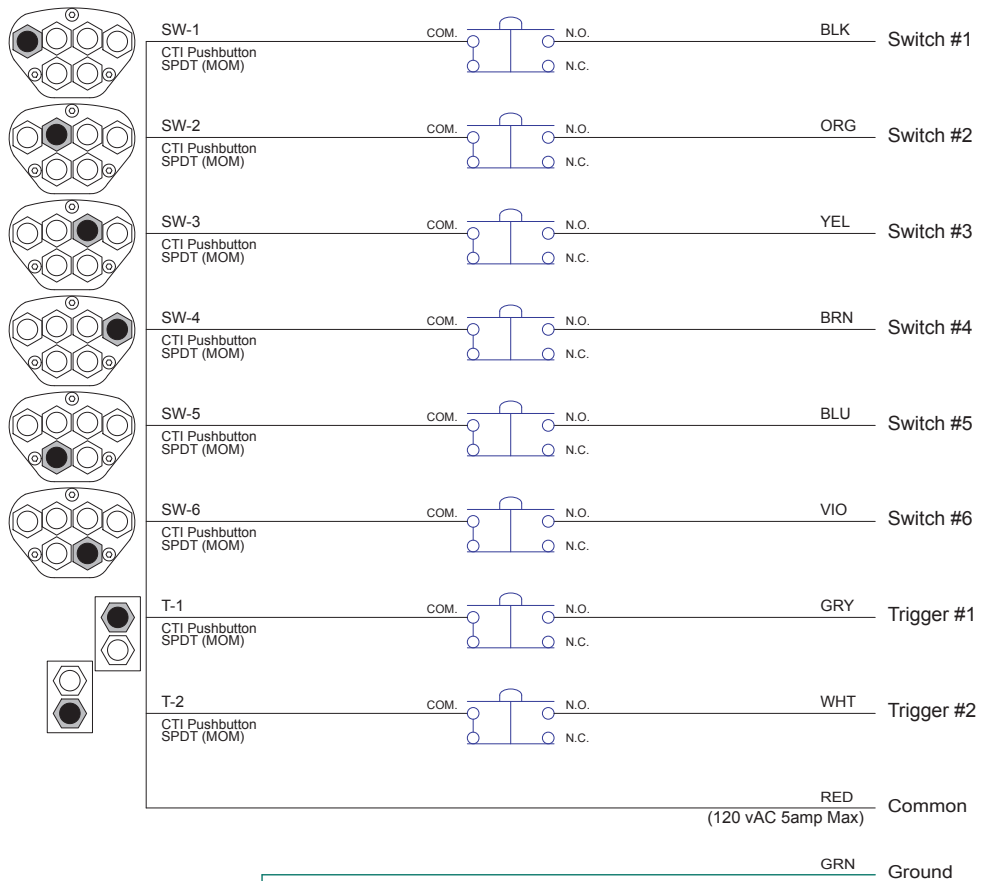
Control Unit Features:

Switches 1- 6: SPDT Mom Pushbutton Switch With Black/Chrome Seal Boots
 Triggers 1-2: SPDT Mom Pushbutton Switch With Black/Chrome Seal Boots
 Standard CTI Overlay
 10 Ft Cable
 1/2 NPT Mounting Thread With Locking Setscrew

General Information:

Control Handle Material: Aluminum
 Finish: Black Powder Coat
 Faceplate Material: Aluminum - 5052
 Overlay Material: Polycarbonate
 Temperature Range: -55°C to +85°C at rated current
 CTI Switch Life Cycles: 10,000,000
 Current Rating: 5 amps @ 120vAC

CTI PART# : CTI-2021253



CAUTION:
 Metal Handle **MUST** Be Grounded For Safe Operation!

Spare Replacment Components For Part # **CTI-2021253**

Handle Part #: **69-960105-01**
 Faceplate: **65-A30323-07**
 Switches 1-6: **32-P-A60215-01**
 Seals 1- 6: **33-BPB-589**

Trigger Switches 1-2: **32-P-A60215-01**
 Trigger Seals 1-2: **33-BPB-589**
 Cable Harness: **22-C-NQ1020-J-11**

