

# 1201-RB HANDY-GRIP®

6 Pushbutton + 2 Triggers w/Caps

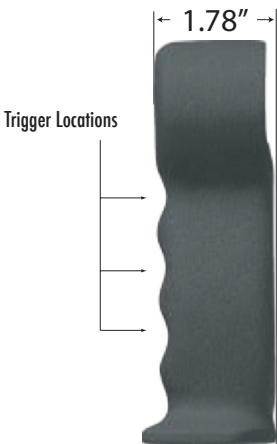


Product shown without cable harness for clarity

## GENERAL DIMENSIONS



1/2 NPT  
Mounting Thread



Product shown without switches for clarity

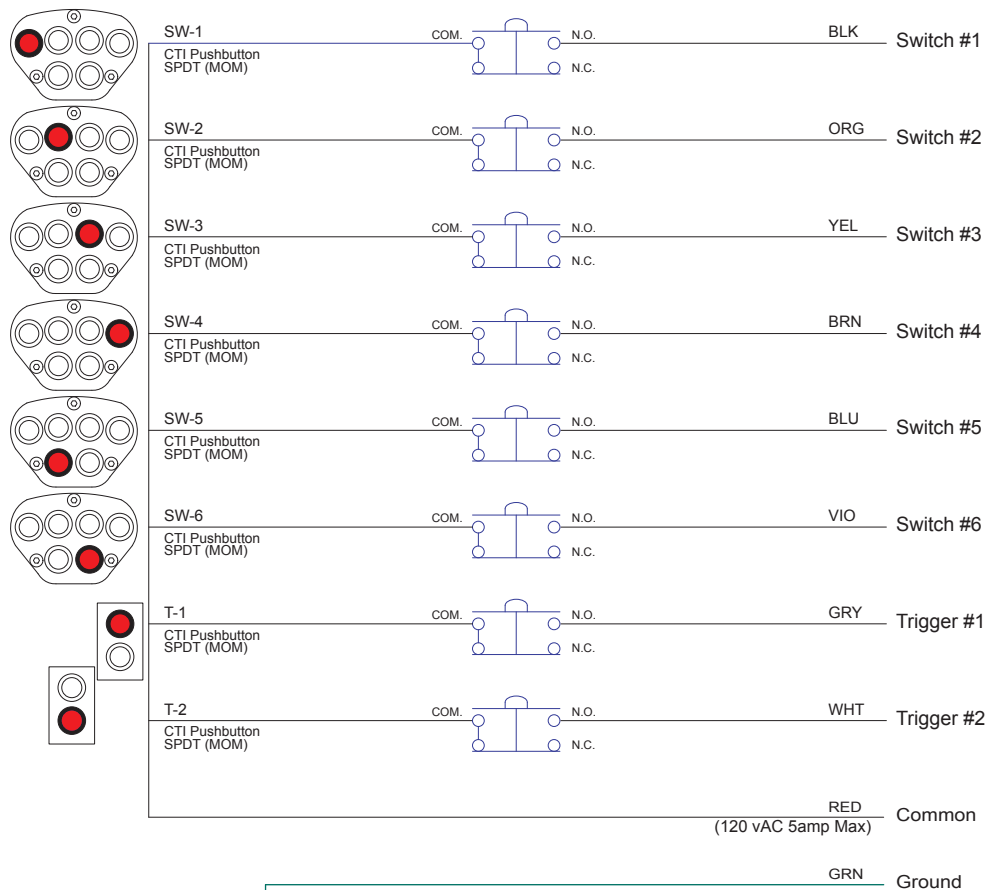
## Control Unit Features:

Switches 1- 6: SPDT Mom Pushbutton Switch With Red Seal Caps  
 Trigger 1-2: SPDT Mom Pushbutton Switch With Red Seal Cap  
 Standard CTI Overlay  
 10 Ft Cable  
 1/2 NPT Mounting Thread With Locking Setscrew

## General Information:

Control Handle Material: Aluminum  
 Finish: Black Powder Coat  
 Faceplate Material: Aluminum - 5052  
 Overlay Material: Polycarbonate  
 Temperature Range: -55°C to +85°C at rated current  
 CTI Switch Life Cycles: 10,000,000  
 Current Rating: 5 amps @ 120vAC

**CTI PART# : CTI-2021257**



**CAUTION:**  
 Metal Handle **MUST** Be Grounded For Safe Operation!

## Spare Replacment Components For Part # **CTI-2021257**

Handle Part #: **69-960105-01**

Cable Harness: **22-C-NQ1020-J-11**

Faceplate: **65-A30323-07**

Switches 1-6: **32-P-A60215-01**

Seals 1- 6: **76-010321-01**

Trigger 1 Switch: **32-P-A60215-01**

Trigger 1 Seal: **76-010321-01**

