

8501-RB HANDY-GRIP™

2 Pushbutton + 2 Trigger w/Caps



Product shown without cable harness for clarity

GENERAL DIMENSIONS



1/2 NPT
Mounting Thread



Trigger Locations

Product shown without switches for

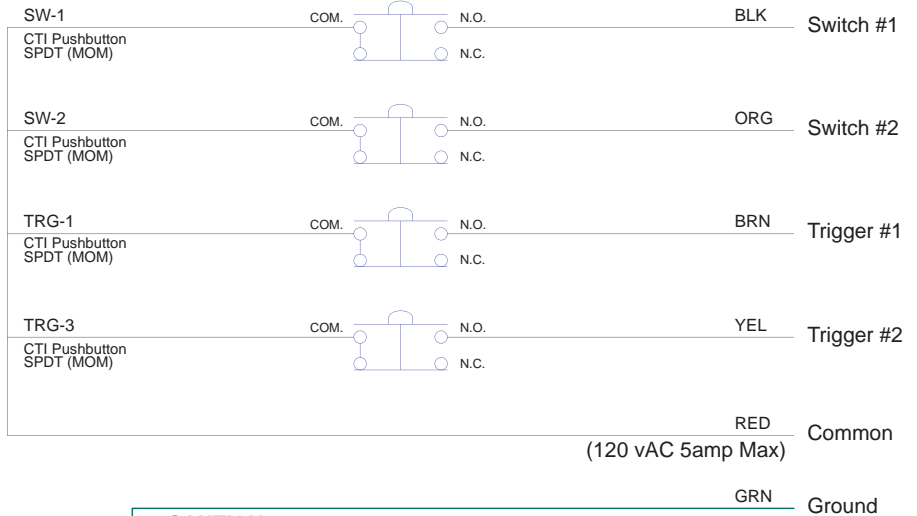
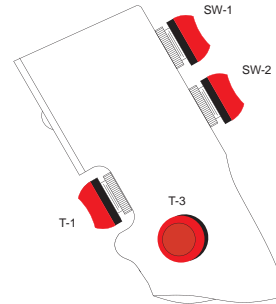
Control Unit Features:

Switches 1-2: SPDT Mom Pushbutton Switch With Red Seal Caps
 Trigger T1-T3: SPDT Mom Pushbutton Switch With Red Seal Caps
 Trigger T2: Sealed Black Nylon Hole Plug
 10 Ft Cable
 1/2 NPT Mounting Thread With Locking Setscrew
 Right Handed

General Information:

Control Handle Material: Aluminum
 Finish: Black Powder Coat
 Temperature Range: -55°C to +85°C at rated current
 CTI Switch Life Cycles: 10,000,000
 Current Rating: 5 amps @ 120vAC

CTI PART# : CTI-2021298



CAUTION:
 Metal Handle **MUST** Be Grounded For Safe Operation!

Spare Replacment Components For Part # **CTI-2021298**

Handle Part #: **69-980070-01** Cable Harness: **22-C-NQ920-J-11**
 Switches 1-2: **32-P-A60215-01**
 Seals 1-2: **76-010321-01**
 Trigger T1-T3: **32-P-A60215-01**
 Trigger Seal T1: **76-010321-01**
 Trigger T2: **99-HPN-1/2**

